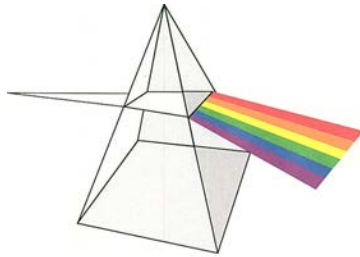


Nomax Solutions



TUBE HANDLING SYSTEMS

HISTORY

- Designed in 1995 to handle “Satin” finished tubing
- First units were fully articulated manipulators
- Pedestal mounted
- Electromagnetic tooling with power source
- Battery backup system included

CURRENT GENERATION

- Vertical lift cylinder on four (4) point trolley
- Floor or ceiling supported overhead rail system provides required movement
- Tractor drives available for ease of use
- Permanent “air-transport” magnets
- Require no power source or backup system
- Gripper Safety circuit to prevent release of unsupported load
- Operates on compressed plant air

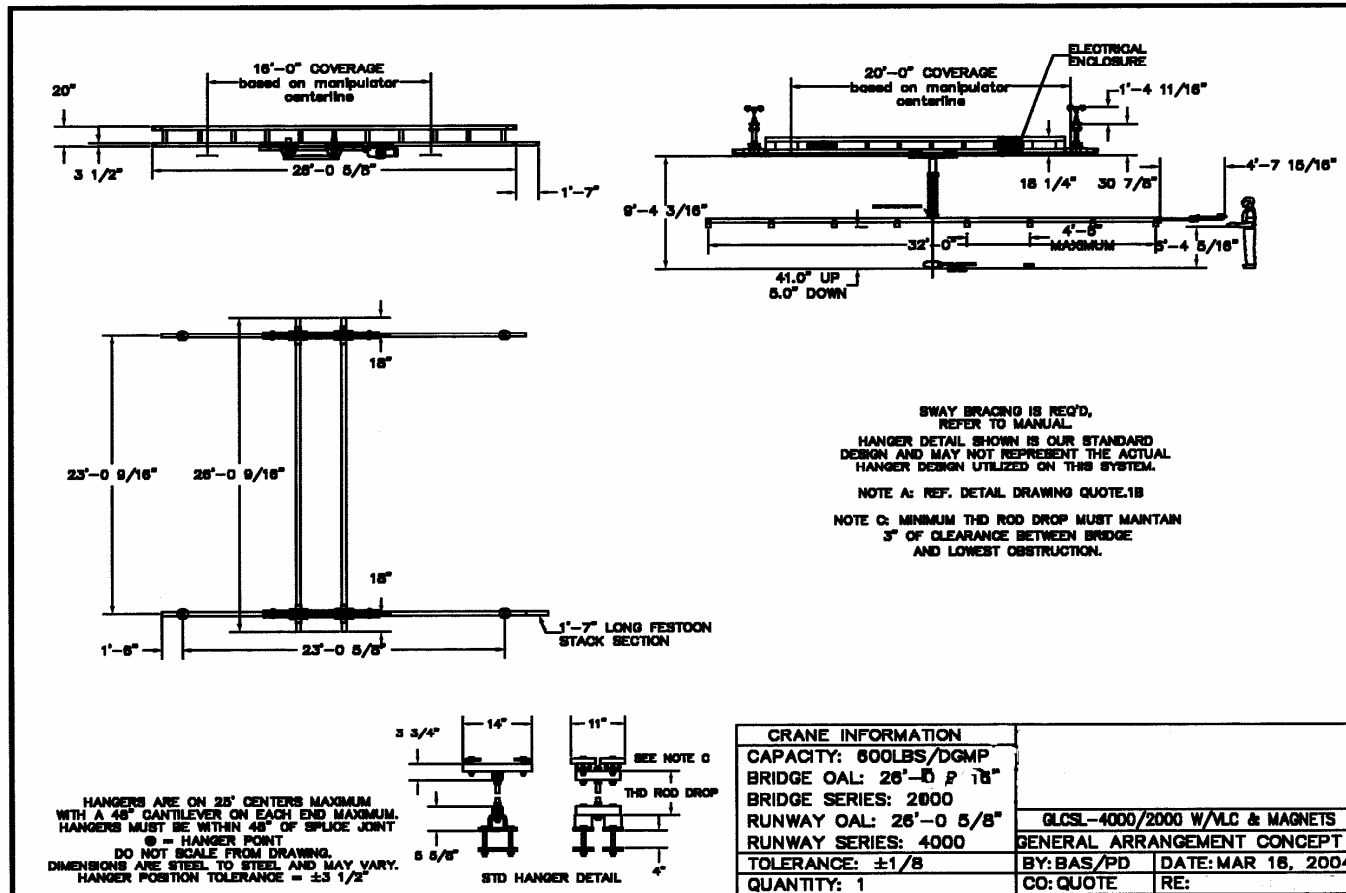
STANDARD CAPACITIES

- Min & max Ga. 22~11
- Rounds .625 and up
- Sq. .625" and up
- Rectangle .500 X .875 and up
- Cut lengths 36"~40'
- Full dunnage row pickup possible
- Other capacities available on request
- All systems are custom designed by Nomax Solutions
- Rail systems available by any length with spans up to 30'
- Units may be rail or pedestal supported depending on work cell

ADDITIONAL BENIFITS

- Typically requires only one ~ two operators depending on runoff table design.
- Greatly reduces risk of employee injury.
- Systems are designed to be moved to new location if required.
- All pneumatic operation, requires less maintenance then Electro-magnetic units.

TYPICAL INSTALLATIONS



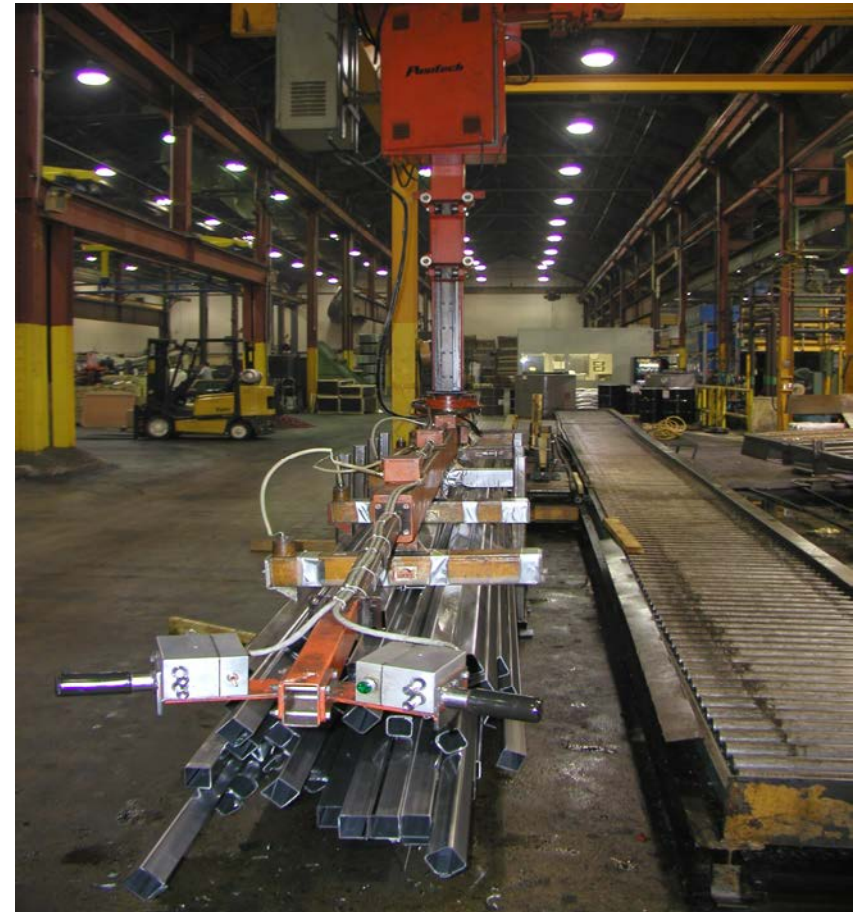
Pneumatic w/ electric magnets

- Electro magnetic tooling
- Battery back-up
- Ceiling supported rail system with tractor drives
- Capacity 400#



Hydraulic w/ electric magnets

- Hydraulic powered lift
- Capacity 1100#
- “I” beam track system with tractor drives



Limited headroom unit



Pneumatic w/ air magnets

- System used to unload structural shapes.
- Lift capacity is 700#
- Tractor driven overhead rail system



Air transport magnet

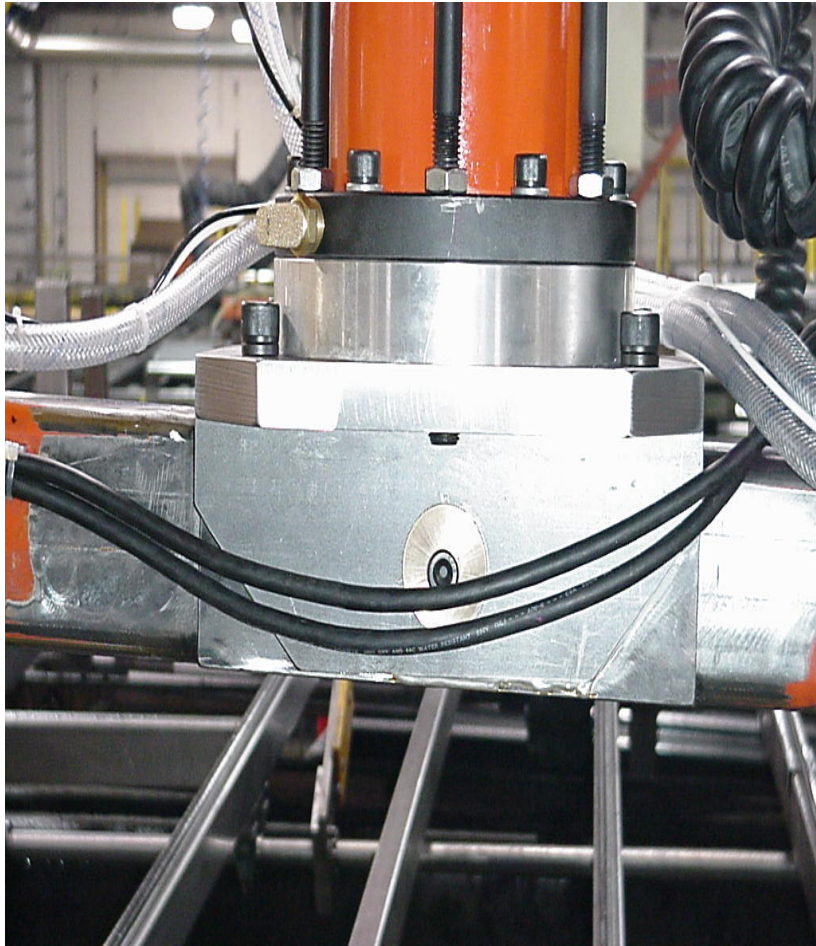


Floor supported system

- System uses “air-transport, permanent magnets.
- Capacity 700#
- Use plant air @ 90 PSI
- No other power supply or battery backup is required
- Floor supported rail with tractor drives



System designed to fit your compound runoff table



Before



After

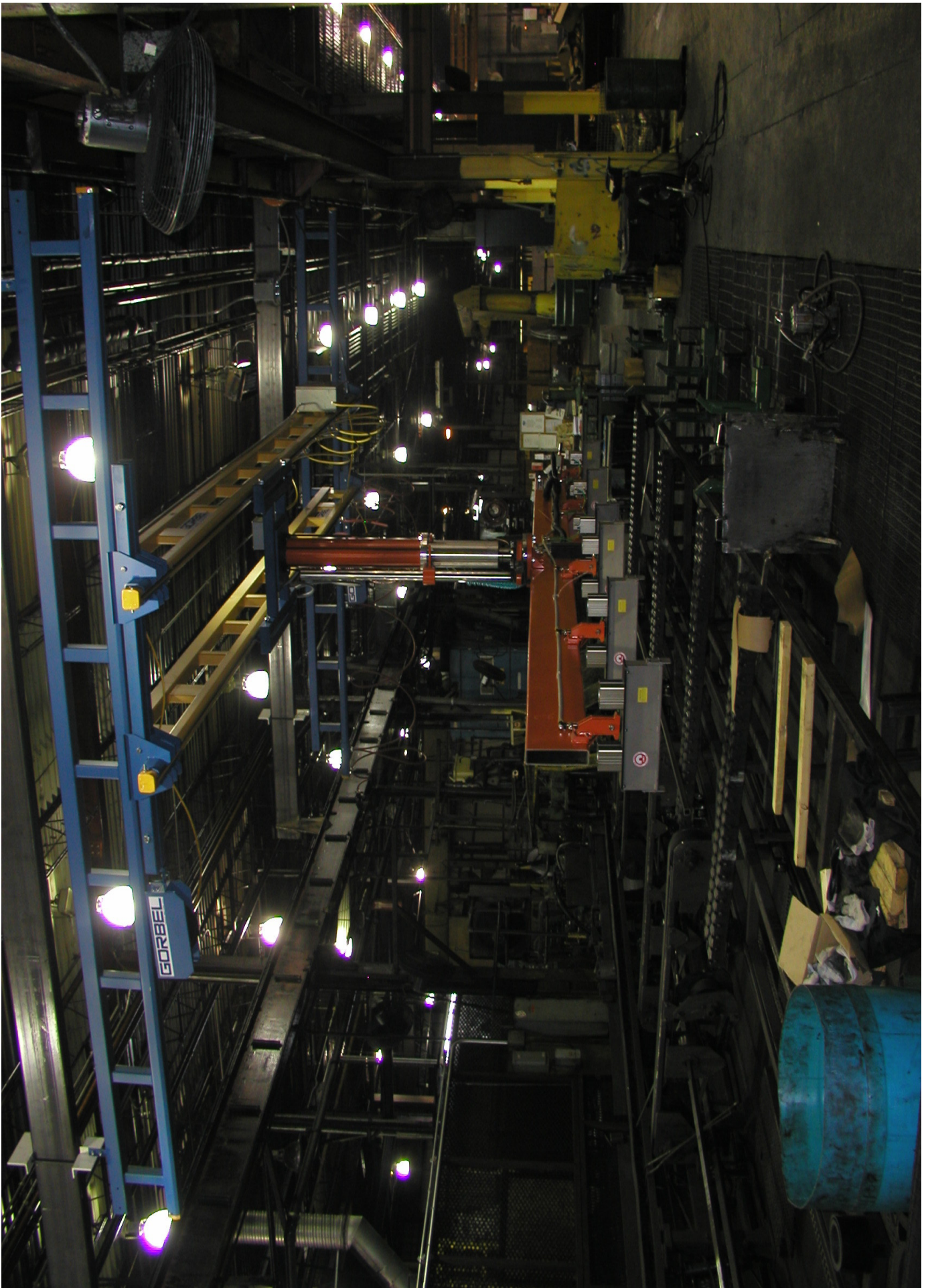


Typical operator controls



Pedestal mounted controls





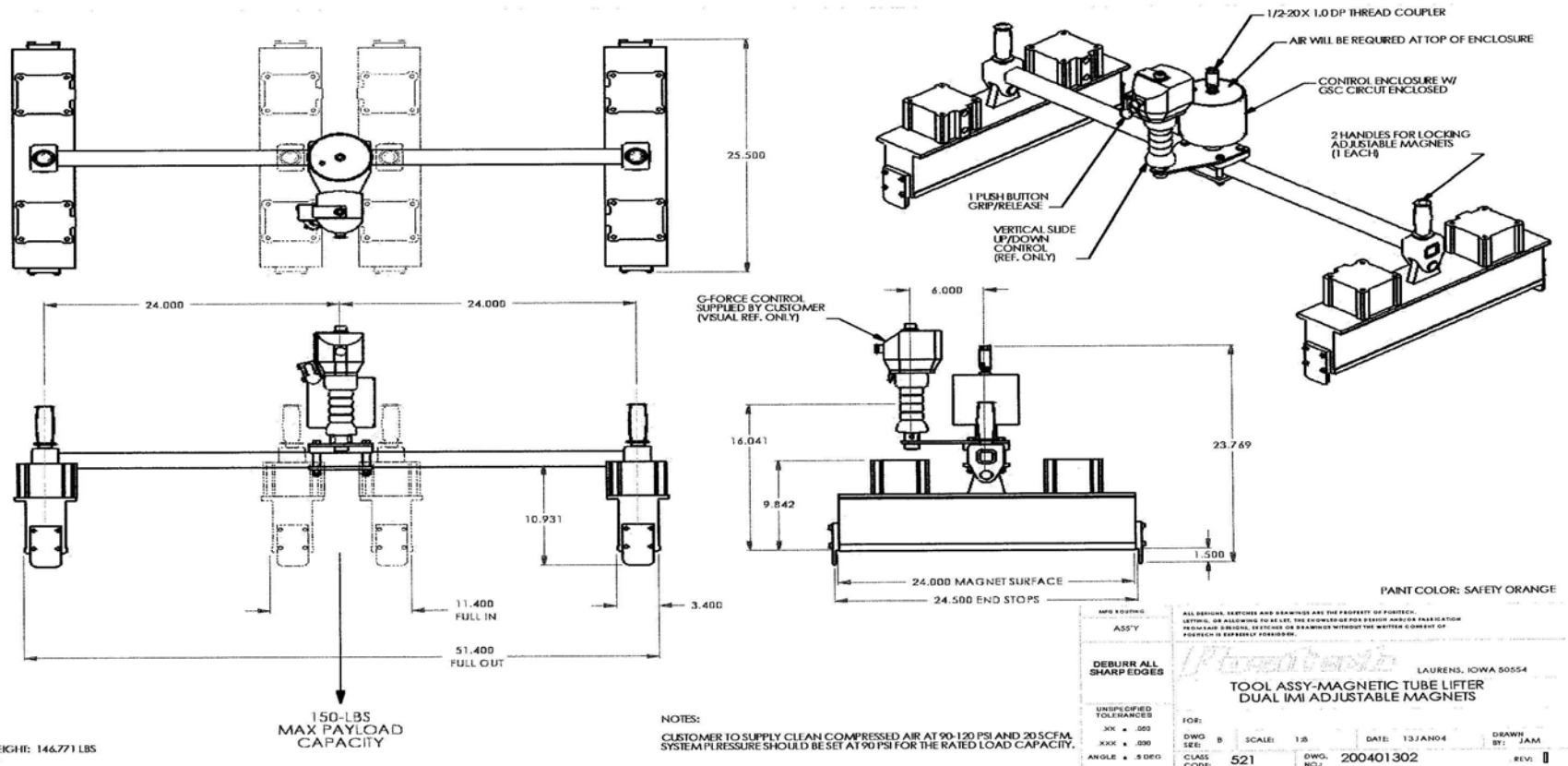


LIGHT WEIGHT HANDLING

- SYSTEM IS USED TO UNLOAD CUTOFF SAWS
- Capacity 100#
- Utilizes GORBEL G-Force technology
- Lightweight aluminum bridge
- Can be tractor driven



Light weight transfer tool



STEELCASE

- Custom system for Steelcase Office Furniture
- Used to load single pieces of tubing onto laser cutter
- System is controlled via remote operator station



The Future

- Currently under development are systems for non-ferrous applications.
- Systems will use vacuum to pick tubes
- Materials will include stainless steel, aluminum and PVC

Contact

Bill Brady
Nomax Solutions LLC
1731 Southampton
S.E.
Grand Rapids, MI
49508

Phone 616-248-5444
FAX 616-248-5446

E-mail:
nomax@sbcglobal.net

